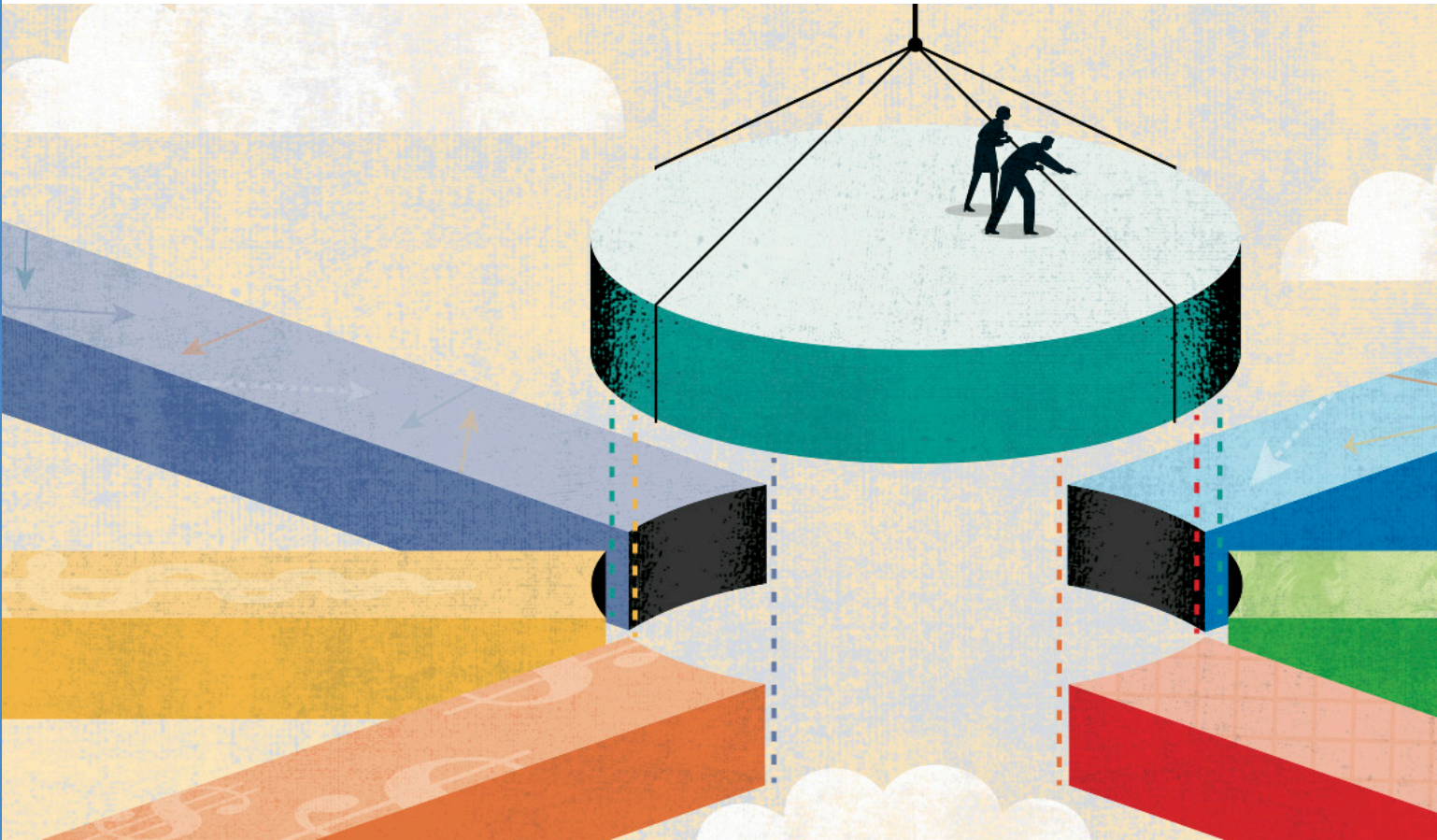




ManhattanLife™

*Standing By You. Since 1850.*



ManhattanLife Lighthouse Series

**OmniFlex™**

**Short-Term Care**

*Welcome to the Future of Short-Term Care*

OmniFlex™ is transforming the Short-Term Care insurance (STCi) industry with its simplified underwriting, affordability, and unparalleled flexibility.

For over 170 years, ManhattanLife has consistently stood by our clients with extensive, yet easy to understand product offerings.

Pictured: ManhattanLife Building on Broadway in the Financial District of Manhattan, New York City. Built in 1894, it was one of the first skyscrapers in New York<sup>1</sup>

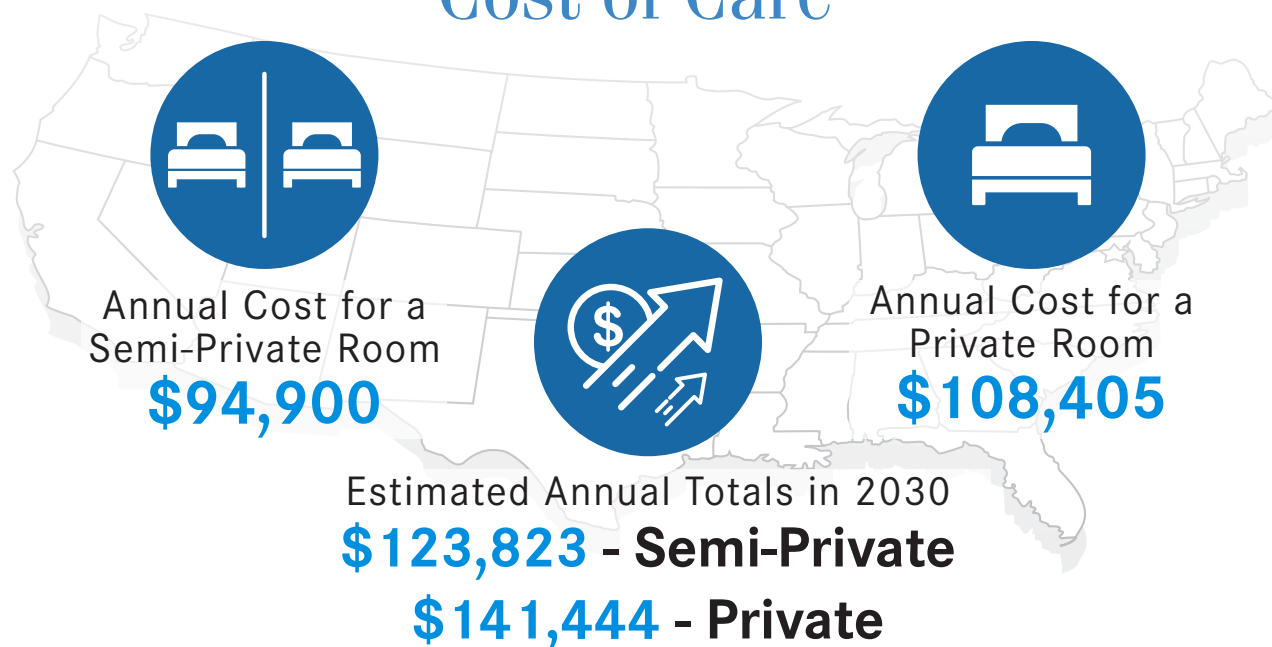




With the cost of Long-Term Care insurance (LTCi) services continuing to rise and health eligibility requirements making it more difficult to qualify, ManhattanLife has developed OmniFlex™ Short-Term Care insurance (STCi) to address the growing need for coverage with an affordable solution.

Rising prices have impacted a vast majority of industries, and the health care industry is no exception. For a semi-private Nursing Home room one can expect to pay an average of \$260 per night.<sup>2</sup> Private rooms are even higher averaging \$297 per night.<sup>2</sup> These figures are expected to continue on an upward trajectory for the foreseeable future.

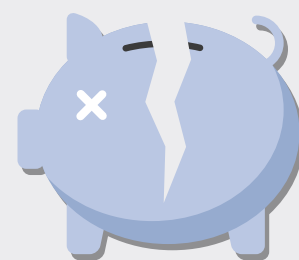
## Cost of Care<sup>2</sup>



## Did You Know:

Almost **40% of those aged 66-69**, and a staggering **47.2% of those over 70 are declined** for traditional Long-Term Care Insurance.<sup>3</sup>

**About 3 of every 5 personal bankruptcies** in the United States are a direct result of overwhelming medical expenses – and 78% of these people had traditional health insurance.<sup>4</sup>



# Plan Now For Peace Of Mind Later When Having To Deal With The Unexpected

Even individuals who lead healthy lifestyles may be at risk of experiencing a health issue requiring the need for therapy and rehabilitation.



## Plan Ahead With OmniFlex™

Being financially prepared to pay for facility-based care, rehabilitative or professional home health care services can be a major concern for a growing segment of the population.

ManhattanLife's new OmniFlex™ STC insurance plan is designed to financially help individuals who are faced with the physical challenges caused by an injury, illness or medical condition.

An OmniFlex™ STC policy automatically includes coverage for:

- Nursing Homes/Facilities
- Assisted Living Facilities
- Hospice Care Facilities
- Bed Reservations
- Prescription Drugs

Enhance and customize your plan with the following optional benefits:

- Home Health Care Rider
- Hospital Indemnity Benefit Rider



# Policy Benefit Options

OmniFlex™ is there when you need it most. When you need assistance with two or more Activities of Daily Living (*Bathing, Continence, Dressing, Eating, Toileting, Transferring*) or suffer from a cognitive impairment, benefits are paid directly to you or a medical provider that you designate. OmniFlex™ benefits are paid in addition to any other health care coverage.

The benefits and premiums for this coverage will vary based on the plan options selected.

## Daily Benefit

\$50 - \$400  
(\$10 increments)

## Elimination Period

0, 20, 60 or 90 days

## Benefit Periods

90, 180, 270 or  
360 days

Your **Lifetime Maximum Benefit** Period is equal to your chosen Benefit Period.

## Other Benefits Included In Your Policy



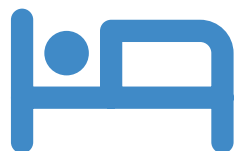
### Prescription Drug Benefit

Your policy includes a benefit of \$10 for each generic or \$25 for each brand name prescription drug, up to a policy year maximum of \$300. *You **do not** need to be receiving services from your OmniFlex™ plan to receive Prescription Drug reimbursements under this Benefit.*



### Fast-50™ Benefit

Exclusive to OmniFlex™ STC plans, the **Fast-50™** Benefit waives the Elimination Period and pays a first-day cash benefit equal to 50% of your accumulated Daily Benefit. While it can be used for anything, **Fast-50™** is perfect for times when a spouse or civil union partner, family or friends chip in and help with your care.



### Bed Reservation

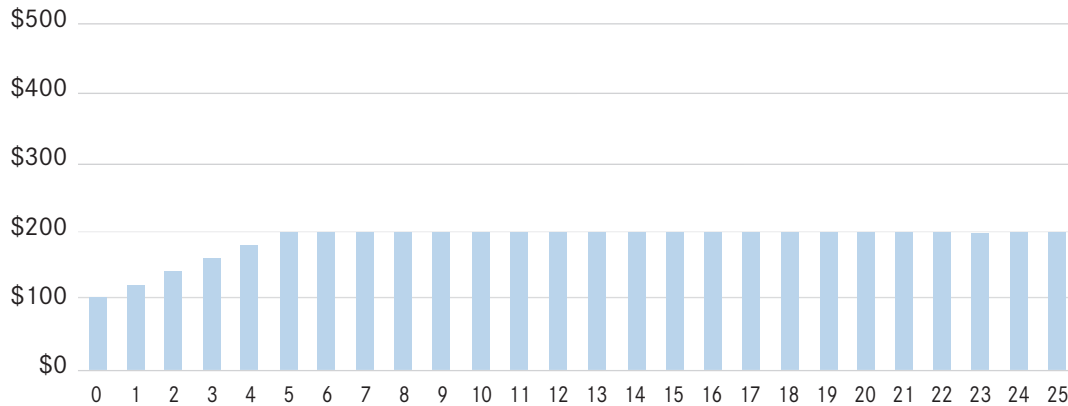
The Bed Reservation benefit will reserve your room for up to 10 days at the Facility where you reside in the event you are admitted to a hospital. The lifetime maximum is 20 days.

*See policy for details and definitions.*

# Daily Benefit Growth

## An OmniFlex™ Example: Daily Base Benefit Elected \$200

On the effective date benefit starts at 50% of daily benefit amount selected. The graph below illustrates how a \$200 Daily Base Benefit starts at \$100 and grows over time.



■ By year 5, your daily benefit grows to \$200.

## Optional Riders

### Short Term Home Health Care Rider

The OmniFlex™ Short Term Home Health Care Rider was created to help provide you with the option to recover from accidents or illnesses from your own home. This rider pays an indemnity benefit for any day you receive a covered home care service, which include: *Nursing Care Services (including from a Home Health Aide), Physical Therapy, Speech Pathology, Occupational Therapy, Chemotherapy Specialist Services, Enterostomal Therapy, Respiratory Therapy, Medical Social Services & Non-Medical Homemaker Services*. This rider can help offset the rising costs<sup>2</sup> of these services.



**\$169/Day**  
Home Health Aide



**\$100 - \$400/Session**  
Physical Therapy



**\$100 - \$250/Session**  
Speech Pathology



**\$56 - \$400/Session**  
Occupational Therapy

### Hospital Indemnity Benefit Rider

This valuable OmniFlex™ rider pays a daily cash benefit to help cover the ever-increasing co-pays, deductibles, or other miscellaneous costs associated with a hospital stay. This rider pays regardless of other insurance coverage you may have in place. *\*Lifetime Max of 180 days*

<sup>2</sup> Source information on back.

# Availability

<b>Issue Age</b>	45 - 89
<b>Underwriting</b>	Simplified Issue
<b>Policy Type</b>	Guaranteed Renewable ( <i>\$25 One-time Policy Fee Applies</i> )

## Base Plan Highlights

Facility Care	
<b>Facility Care Daily Benefit</b>	\$50 - \$400
<b>Elimination Period</b>	0, 20, 60, or 90 days
<b>Benefit Period</b>	90, 180, 270 or 360 days
<b>Lifetime Maximum Benefit Period</b>	Chosen Benefit Period
<b>Bed Reservation Benefit</b>	10 days (Lifetime Max 20 days)

Built-in Benefits	
<b>Prescription Drug Benefit</b>	\$10 Generic / \$25 Brand \$300 Policy Year Max
<b>Fast-50™</b>	Waives Elimination Period on Facility Care or Home Health Care Benefits to receive 50% level of accumulated Daily Benefit – perfect for care provided by a spouse or civil union partner, family or friends.

## Optional Benefits

Short Term Home Health Care	
<b>Home Health Care Daily Benefit</b>	\$50 - \$300
<b>Elimination Period</b>	0, 20, 60, or 90 days
<b>Benefit Period</b>	90, 180, 270 or 360 days
<b>Lifetime Maximum Benefit Period</b>	Chosen Benefit Period

Hospital Indemnity Benefit	
<b>Daily Benefit</b>	\$50 - \$300
<b>Benefit Period</b>	3, 6 or 20 days
<b>Lifetime Maximum Benefit Period</b>	186 days

See policy for details and definitions.

# Claim Example: Anthony

Anthony's goal was to age in place in the home he and his spouse or civil union partner of 40 years loved. Planning ahead to accomplish his goal, he purchased an OmniFlex™ STC plan that included a \$280 base Daily Benefit and a 360-Day Short Term Home Health Care Rider. He especially liked the built-in Fast-50™ benefit that pays first-day cash – even for help from a spouse or civil union partner, family or friends.

Anthony owned his OmniFlex™ plan for 10 years before his health changed and he needed assistance.

With a Daily Benefit of \$280, he was comforted to know that his Fast-50 HHC Benefit would pay \$140 per day.

Despite his challenges, his spouse or civil union partner\*, Sandy, provided informal care at home. So at claim time, Anthony chose to collect his \$140/day Fast-50™ HHC benefits, which began immediately and could be used in any way the family needed.

After 6 months, Anthony recovered and regained his independence.

His policy had paid a total of \$25,200 in Fast-50™ HHC benefits.



OmniFlex™ allowed Anthony to recover in his own home, with care provided by a caregiver of his own choice. He still had 6 months remaining in his Benefit Period, should his need for care return in the coming weeks and months.

## The Power of the Fast-50™

Fast-50™ is a unique, built-in feature of OmniFlex™ Short-Term Care plans. This benefit pairs with the Facility Care Benefit and/or Short Term Home Health Care Benefit, if selected, and allows you to receive 50% of your Daily Benefit, *without first satisfying your elimination period.*

Anthony's story above is not unique. Many individuals want to remain in their home for as long as possible. And when the need for care arises, they turn to a spouse or civil union partner, family member or trusted friend for help. The first-day cash from Fast-50™ can provide the perfect solution.

*Not an actual policyholder or claim example - for example purposes only.*



# Claim Example: Julie

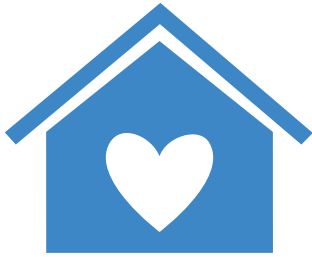
Julie recognized the importance of planning ahead. As a widow with fixed income and assets, she could be at great financial risk if she needed care. Her goal was to have a plan that provided coverage for in-home care, as well as care in an Assisted Living Facility or Nursing Home.

At 76, she was concerned about securing an insurance policy that would provide benefits for facility and home health care. Julie learned of [OmniFlex™](#) and was able to purchase a plan with a \$200 Daily Benefit for both facility and home care. Five years later at age 81, Julie needed assistance with daily living. She was pleased that her [OmniFlex™](#) plan would pay \$200 per day and was able to remain at home, as the home health care benefit was included in her policy.



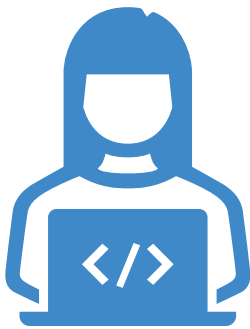
*Not an actual policyholder or claim example - for example purposes only.*

# Even More Reasons to Love OmniFlex™



## Spousal Discount

A 10% spousal discount is available if you live in a home with a legal spouse or civil union partner who has a Short-Term Care policy or is applying for a Short-Term Care policy with our company.



## Build a Plan Tailored for You

Utilizing the OmniFlex™ plan's varying base options, benefit & elimination periods, as well as Rider choices, you can now build a custom Short-Term Care plan that ensures the most appropriate coverage possible for your given situation.



## Short-Term Costs Add Up

27 days is the average length stay for short-term care in a skilled nursing facility, and at the national average cost of **\$260- \$297** per day, these costs can escalate quickly.<sup>1</sup>



## Feel Confident in Your Decision

If for any reason, you decide a Short-Term Care insurance (STCi) plan is not right for you, return it to us within 30 days for a full refund of any premium you paid.

# Short-Term Care Insurance is an Ideal Solution!

- **OmniFlex™** enables more individuals to obtain coverage due to its innovative plan design and higher issue ages (up to 89!)
- **OmniFlex™** is a more affordable alternative to Long-Term Care insurance (LTCi), with flexibility that allows the plan to be customized to fit nearly any budget.
- **OmniFlex™** can help supplement existing Long-Term Care insurance (LTCi) that can have longer elimination periods.
- **OmniFlex™** has several optional benefits that add great value!

## **EXAMPLE: Utilizing The Hospital Indemnity Benefit Rider**

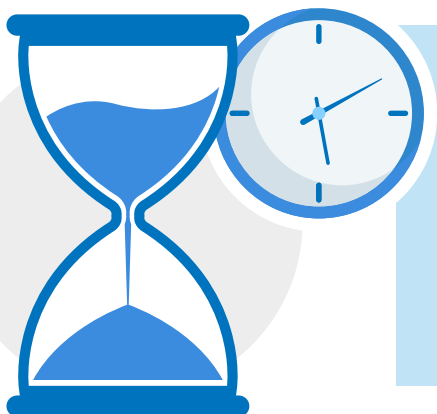
6 Day Benefit at \$300/Day = \$1,800 Cash Benefit

This very affordable rider can be added to any **OmniFlex™** plan *with no additional underwriting*. Your cash benefit can help with the significant out-of-pocket costs from a hospital stay.

It's perfect for filling gaps from a Medicare Advantage plan!

---

## The Time To Buy Is Now



As with many types of insurance, eligibility is based on health status. Therefore, NOW is the time to purchase a plan before your health status changes and you no longer qualify for coverage.

*This brochure provides an overview of your **OmniFlex™** Short-Term Care insurance (STCi) policy. Your agent/producer will provide you with an outline of coverage that includes complete details.*



**ManhattanLife**<sup>™</sup>

*Standing By You. Since 1850.*

Underwritten by:

Standard Life and Casualty Insurance Company

PO Box 510690; Salt Lake City, UT 84151-0690

Benefits and riders may vary by state and may not be available in all states.

This is not a full disclosure of plan qualifications and limitations. To access the complete disclosure list for the Short-Term Care product, visit **[disclosure.manhattanlife.com](https://disclosure.manhattanlife.com)**. Please review this information before applying for coverage. The amounts of benefits provided depend on the plan selected. Premiums will vary according to the selection made.

POLICY FORM NUMBER

AL7060PA

RIDER FORM NUMBER

AL7060HCPA, AL7060HRPA

This brochure only provides a brief description of the important features of your policy. Only the actual policy provisions will control; therefore, it is important that you **READ YOUR POLICY CAREFULLY**.

---

#### **SOURCE INFORMATION**

<sup>1</sup> Korom, Joseph J. *"The American Skyscraper, 1850-1940: A Celebration of Height"*, Braden Books, 2008.

<sup>2</sup> Genworth Cost of Care Survey 2021, conducted by CareScout<sup>®</sup>, August 2022; [www.genworth.com/coc](https://www.genworth.com/coc)

<sup>3</sup> 2022 Milliman Long Term Care Insurance Survey, July 2022

<sup>4</sup> American Association for Critical Illness Insurance, "Critical Illness is a Real Risk," 2012